

# STATIONS IN SPANISH I

Trudy Anderson

New Haven Public School

[trudy.anderson@new-haven.k12.ct.us](mailto:trudy.anderson@new-haven.k12.ct.us)

# WHY STATIONS

- ▶ Students learn independently
- ▶ Teacher can work with smaller groups
- ▶ Great for review and expanding on material already taught
- ▶ Introduce new material
- ▶ Students work together to “figure it out”
- ▶ Students like them
- ▶ Break from normal routine

# HOW DO I SET UP STATIONS

- ▶ Set up locations around the room
- ▶ Label each station with clear directions
- ▶ Explain each station to students
- ▶ Make sure to have all materials in the stations (headphones, copies, timer, extra laptops etc.)
- ▶ Group students ahead of time and assign them to a start station
- ▶ Make sure to have enough stations so that the groups aren't too big
- ▶ Leave one station empty for early finishers
- ▶ Explain how to wrap up the station at the end of class

# TYPES OF STATIONS

- ▶ Listening/videos
- ▶ Reading
- ▶ Speaking
- ▶ Something old
- ▶ Something new
- ▶ Just for fun
- ▶ Holidays
- ▶ Games with a purpose

# CHOOSING MATERIALS

- ▶ Pinterest
- ▶ Teachers Pay Teachers
- ▶ Youtube
- ▶ Newspaper, magazines
- ▶ Flyers
- ▶ Yellow pages, infographics
- ▶ Teacher created materials and textbook website
- ▶ Materials from other subjects- math, social studies etc
- ▶ Pictures
- ▶ Zachary Jones (love their twiccionario)

# QUESTIONS/ACTIVITIES

- ▶ What should we ask the students to do?
- ▶ Questions in English or target language
- ▶ See question types handout

# PICTURES

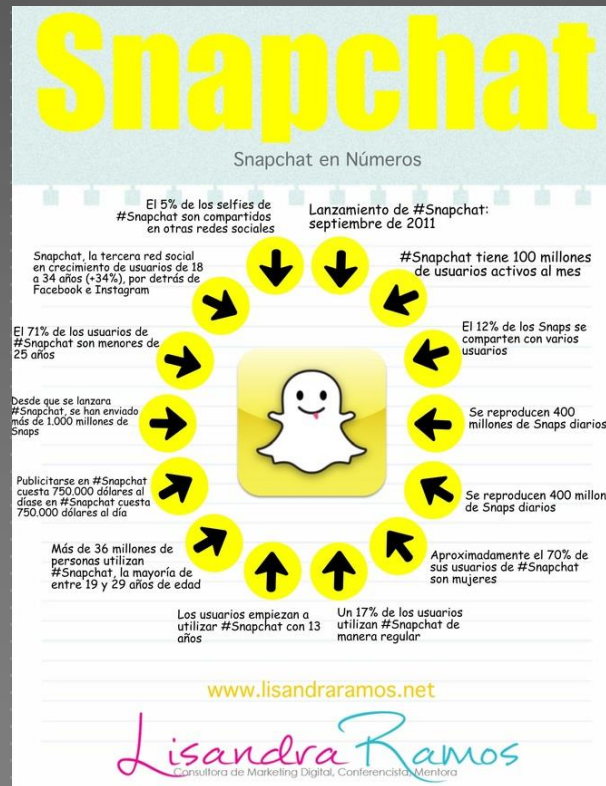


# VIDEOS

- ▶ <https://www.youtube.com/watch?v=ucMcX0IF5SU> Arrocha
- ▶ <https://www.youtube.com/watch?v=OpWMZmADGcw> Kmart
- ▶ <https://www.youtube.com/watch?v=0ruHOaHrGnQ> Pand G




# INFOGRAPHICS



# WRITING

Name \_\_\_\_\_

**Mr. Grinch**  
List words that describe Mr. Grinch



A worksheet for describing Mr. Grinch. It features a central line drawing of Mr. Grinch's face and upper body, wearing his signature red and white striped hat and a white fur collar. Surrounding the character are 15 empty ovals, each connected to the character by a thin line, intended for students to write descriptive words. The entire worksheet is enclosed in a dashed rectangular border. At the top left, there is a line for the student's name. Below the name, the text 'Mr. Grinch' is written in a bold, stylized font, followed by the instruction 'List words that describe Mr. Grinch'. In the bottom right corner of the worksheet, there is a small copyright notice: '© 2009 Scholastic Teaching Resources'.

# WRITING



# JUST FOR FUN

- ▶ Games (dice, Uno cards etc.)
- ▶ Coloring pages (numbers, conjugations)
- ▶ Songs (fill in the blanks etc.)

# SONGS

- ▶ <https://www.youtube.com/watch?v=R2DX67qHmRw> A mi me gustan las hamburguesas

# READING

62 Bodegas - Abastos y Supermercados La Guía



## FOOD WORLD

345 HUNTINGTON TURNPIKE • BRIDGEPORT

**203•373-9238**

PESCADERÍA

**203•373-9986**

**HOMETOWN PROUD**  
*America*

**¡SÍ!...ACEPTAMOS**

- Los Cupones de Alimentos y WIC
- Visa • MasterCard
- Las Tarjetas Débito

**DOBLAMOS  
LOS CUPONES HASTA  
99¢**

*pregunte en la tienda por los detalles*

Lunes a Sábado 8:00 a.m.-8:00 p.m.  
Domingos 8:00 a.m.-7:00 p.m.

**FRUTAS Y  
VERDURAS  
FRESCAS**

TRANSPORTADAS  
5 DÍAS A LA  
SEMANA DESDE  
HUNTS POINT  
MARKET

**LOS  
DEPARTAMENTOS  
DE FRUTAS,  
VERDURAS  
Y MARISCOS  
MÁS GRANDES  
DEL ÁREA**

**PESCADO  
FRESCO  
TODOS  
LOS DÍAS**

TRANSPORTADO  
5 DÍAS A LA  
SEMANA DESDE  
FULTON FISH  
MARKET



# ACCOUNTABILITY

- ▶ Students should be told why they are doing the stations
- ▶ Students should expect that some of the work will be graded
- ▶ Don't tell them which ones ahead of time
- ▶ Monitor their work
- ▶ Move around if you are not one of the stations
- ▶ Depending on observations, some activities can be done whole class.